

# AUF Series LED UV Flood Lamps



We manufacture highest quality of LED UV Products in accordance with international standards ASTM E3022. The AUF Series of LED UV Flood Lamps are considered to be the benchmark in the NDT Industry. These Lamps are rugged and cost effective which makes them a perfect combination to be used for Fluorescent Inspection.

The most unique feature of AUF Series of LED UV Flood Lamps as that they all can be connected with each other on either side which means you can extend the length of coverage area to any extend depending on the requirement.



**Salient Features:**

- Instant ON/OFF, No Warm-Up Time For Full Intensity
- Long Lasting LED's (40,000 Hrs.) Life
- Even Beam Profile Without Hotspots
- UV-A Pass Filter
- Robust Aluminium Housing
- Inter Connected with Each Other
- Switchable between UV & White Light
- Intensity Control with Pot Knob
- Mechanical Active Cooling System with Fans

Order Part No.	8 UV-A LED + 2 White LED	16 UV-A LED + 4 White LED	32 UV-A LED + 8 White LED
<b>Model</b>	AUF-350	AUF-500	AUF-1000

**Kit Contains:**

- LED UV Flood Lamp
- Power Cord Cable
- Chains with Hooks
- Operation Manual & Certificate of Conformity

**Note:**

- Kindly Specify the Plug Type
- Standard Warranty: 12 Month. For extended warranty please feel free to talk to sales team.

**AUF - 350**



**Technical Specifications:**

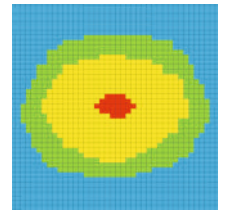
Light Source	: 8 UV-A LED/2 White LED
Min UV-A Intensity with filter at a distance of 15"(38cm)	: 6500 uw/cm <sup>2</sup>
White Light Intensity	: >3500 Lux/>325 ft-candle
White Light Emission in UV mode	: <10 Lux (0.92 fc)
Wavelength (Peak)	: 365 nm ± 5 nm
Max Beam Coverage Area	: 400mm x 270mm
Intensity Control	: From 20% - 100%
Power Requirement (AC Mains)	: 100V - 264V, 50-60Hz
Housing Material	: Powder Coated Aluminium
Housing Dimensions	: 240x170x100 mm
Weight	: 4 Kg (8.8 lbs)

**Beam Irradiance Pattern & Profile**

- Blue <200 μW/cm<sup>2</sup>
- Green 200 - 1000 μW/cm<sup>2</sup>
- Yellow 1000 - 5000 μW/cm<sup>2</sup>
- Red 5000 - 10000 μW/cm<sup>2</sup>
- White > 10000 μW/cm<sup>2</sup>



8 - LED Array at 15"



AUF-350

**AUF - 500**

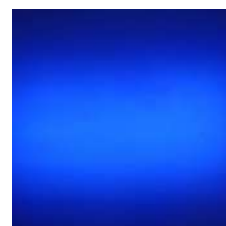


**Technical Specifications:**

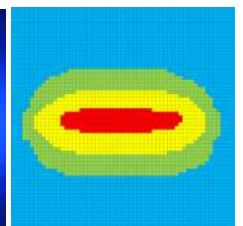
Light Source	: 16 UV-A LED/4 White LED
Min UV-A Intensity with filter at a distance of 15"(38cm)	: 6500 uw/cm <sup>2</sup>
White Light Intensity	: >3500 Lux/>325 ft-candle
White Light Emission in UV mode	: <10 Lux (0.92 fc)
Wavelength (Peak)	: 365 nm ± 5 nm
Max Beam Coverage Area	: 600mm x 270mm
Intensity Control	: From 20% - 100%
Power Requirement (AC Mains)	: 100V - 264V, 50-60Hz
Housing Material	: Powder Coated Aluminium
Housing Dimensions	: 485x170x100 mm
Weight	: 7.5 Kg (16.5 lbs)

**Beam Irradiance Pattern & Profile**

- Blue <200 μW/cm<sup>2</sup>
- Green 200 - 1000 μW/cm<sup>2</sup>
- Yellow 1000 - 5000 μW/cm<sup>2</sup>
- Red 5000 - 10000 μW/cm<sup>2</sup>
- White > 10000 μW/cm<sup>2</sup>



16 - LED Array at 15"



AUF-500

## AUF - 1000

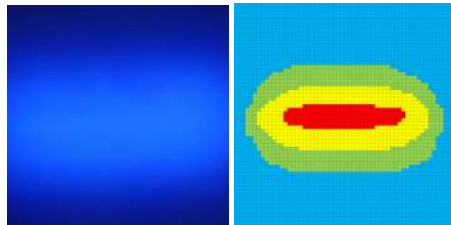


### Technical Specifications:

Light Source	: 32 UV-A LED/8 White LED
Min UV-A Intensity with filter at a distance of 15"(38cm)	: 6500 $\mu\text{W}/\text{cm}^2$
White Light Intensity	: >3500 Lux/>325 ft-candle
White Light Emission in UV mode	: <10 Lux (0.92 fc)
Wavelength (Peak)	: 365 nm $\pm$ 5 nm
Max Beam Coverage Area	: 1100 mm x 270 mm
Intensity Control	: From 20% - 100%
Power Requirement (AC Mains)	: 100V - 264V, 50-60Hz
Housing Material	: Powder Coated Aluminium
Housing Dimensions	: 960x170x100 mm
Weight	: 15.5 Kg (34.1lbs)

### Beam Irradiance Pattern & Profile

- Blue <200  $\mu\text{W}/\text{cm}^2$
- Green 200 - 1000  $\mu\text{W}/\text{cm}^2$
- Yellow 1000 - 5000  $\mu\text{W}/\text{cm}^2$
- Red 5000 - 10000  $\mu\text{W}/\text{cm}^2$
- White > 10000  $\mu\text{W}/\text{cm}^2$



32 - LED Array at 15"

AUF-1000

© Copyright 2024 by Arora Technologies (P) Limited. Specifications are subjected to change without notice.