

Distribution Of NDT Solutions

Distribution of NDT Solutions

In this vertical, we represent many reputed companies based in North America & Europe and look after the marketing & distribution of their products in India. We also support our customers with effective after sales services, technique/product related trainings and in application analysis.

We cater to a wide spectrum of industries ranging from manufacturing, heavy engineering, nuclear, aviation, research & development, refineries, petrochemicals, power stations etc. The equipment's we deal in are employed in quality control assessments during production as well as in post-production stage, in-service inspection, and maintenance activities of running plants, research, and related activities etc.



AEROFAB-NDT
Inspection Tools for Safer Skies



Applus⁺
RTD



DIAKONT



DRTECH



Eddyfi
Technologies



EKOSCAN
INDUSTRIAL ULTRASOUND



EXTENDE
CIVA



FLAWTECH



FORETEC
ACCESS SEE CONTROL



IBAK



inductosense



Innerspec
High-performance NDT solutions



INTRON



ionix
ADVANCED
TECHNOLOGIES



JSR Ultrasonics



Phoenix LSL
Inspection Systems Limited



ritec
ROHR-INSPEKTIONSTECHNIK



VISION IN X
INDUSTRIAL IMAGING

Ultrasonic Installed Sensors

We offer **Battery-Free, Ultrasonic Thickness Sensors** that are permanently installed to the surface of pipework or vessels. These specially designed sensors are wirelessly powered-up by handheld data collection tool, and a thickness measurement is simultaneously collected. These measurements can be uploaded to software for remote data management, allowing operators to effectively monitor internal corrosion & erosion.

Install passive **WAND Sensors** at corrosion monitoring locations



TMS Sensors



Salient Features:

- Battery-free - wirelessly activated
- Ultrathin easily embeddable & lightweight
- RFID tagged
- ATEX/IECEx certified

WAND-HDC



Salient Features:

- User interface displays ultrasonic A-Scan, thickness and location information
- Easy to use – anyone can take a measurement, which reduces demand for specialist personnel
- Acquire a measurement in seconds

WAND-RDC (Remote Data Collector)



Salient Features:

- Up to 200m wireless range
- 5-year(+) battery life
- Up to **8 WAND Sensors** can be connected per RDC module, using reader pad wires
- Inbuilt temperature sensor.

i-DART Software



Salient Features:

- Manage all sensor measurements remotely
- Analyse ultrasonic A-Scans and determine corrosion/erosion rates
- Export reports

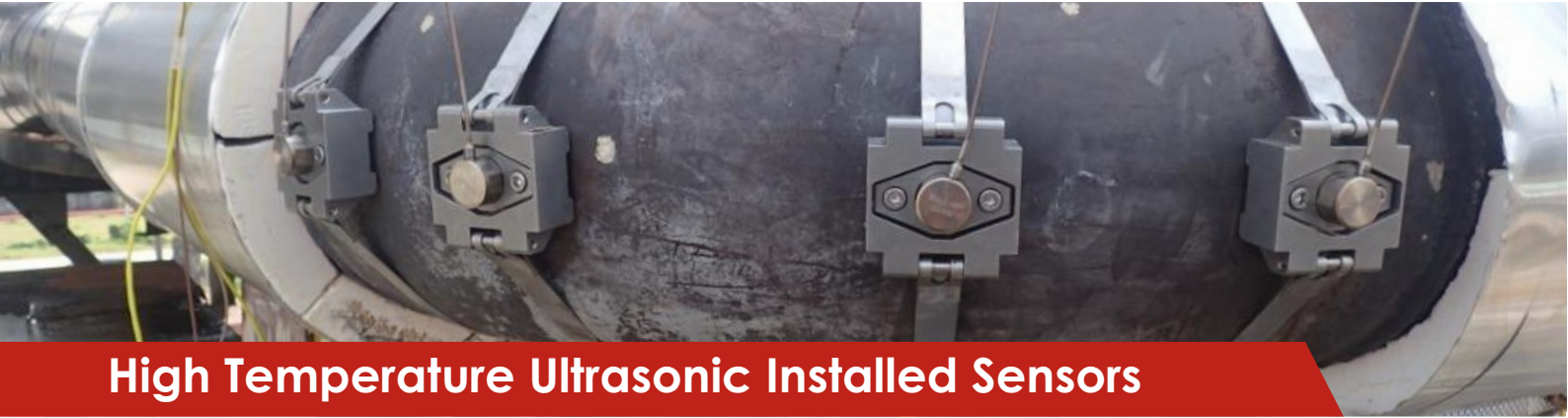
Accessories

ECHO Extension Cable

Salient Features:

- Extension coil for installing sensor under insulation
- Overlays easily on top of preinstalled sensors
- Thin, flexible and robust
- Eliminates need for inspection ports
- Set length varieties from 45cm up to 6m.





High Temperature Ultrasonic Installed Sensors

We offer high temperature ultrasonic installed sensors from M/s. IONIX Advanced Technologies, UK. The Hotsense series of high temperature ultrasonic installed sensors offers reliable and stable thickness measurement from -40° C to 550° C. High temperature ultrasonic installed sensors are connected to wireless hart network system which automates the thickness and corrosion monitoring by collecting measurement simultaneously at a preset schedule and transferring data directly to control room, which make it non-invasive, automated and wireless ultrasonic monitoring solutions. Fixed UT sensors provide increased measurement precision and collection frequency for reliable and real-time corrosion trending.

IONIX also offers high temperature ultrasonic Transducer for thickness measurement and Time-Of-Flight-Diffraction Transducer.

Dual Element Sensor



Salient Features:

- Dual element sensors can be deployed directly onto coated assets using a bonded/ magnetic system.
- Installation on all sizes of pipes and vessels.
- -55°C to +150°C continuous measurement temperature range.
- Measurements can be made through standard coating thicknesses of 0.2 – 1.2 mm without coating removal or modification.

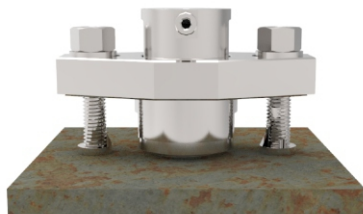
High Temperature Sensor



Salient Features:

- High temperature sensor can be deployed directly to hot assets by using standard clamp NPS 2" To NPS 16".
- Installation under insulation on high temperature pipes and quick to install and remove.
- -55°C to +380°C continuous measurement temperature range.

Ultra High Temperature Sensor



Salient Features:

- Ultra high temperature sensor can be deployed directly to hot assets by using a welded studs
- Installation on large high temperature pipes and vessels.
- -55°C to + 550°C continuous measurement temperature range.
- Reduced maintenance, cost efficient, improved network stability.

Wirelesshart Thickness Node Caliperay



Salient Features:

- Automated thickness and temperature measurements integrated with thermocouple.
- Intrinsically safe and certified (FM CI 1 Dv 1-2, ATEX & IECEx Zone 0-1).
- Flexible and robust deployment and data management options.

High-Temperature Dual Element Thickness Gauging Transducers



Salient Features:

- Make wall thickness measurements on hot assets, in-service, without the need to shutdown or isolate.
- -55°C to +550°C wide measurement temperature range for all in-service assets.
- No cooling required up to 350 °C. Increase your productivity between calibrations and reduce duty cycling.

High-Temperature TOFD Transducers



Salient Features:

- -55°C to +350°C continuous use temperature range.
- No cooling required. Increase your productivity by reducing duty cycling.
- Make weld inspections on hot assets, on-stream, without the need to shutdown or isolate.
- Compatible with commercial scanners and crawlers.



Phased Array Equipment With TFM/FMC/TOFD

Gekko

M2M Gekko is a field-proven flaw detector offering PAUT, UT, TOFD and TFM through the streamlined user interface Capture. Available in 32:128, 64:64 or 64:128 channel configurations & TFM imaging up to 128 elements.

Salient Features:

- Complete toolbox for TFM including TCG calibration
- High-resolution TFM imaging up to 128 elements
- 3-axis nozzle inspection with live overlay display
- 3-axis paintbrush for composite and corrosion mapping
- Live display of fillet weld inspection
- Real-time Adaptive TFM (ATFM) for inspection of wavy surfaces



Mantis

M2M Mantis is a robust and lightweight flaw detector offering UT, PAUT, TOFD, and TFM through the streamlined user interface Capture. Available in 16:64 PR channel configuration 8. TFM imaging upto 64 elements.

Salient Features:

- Portable, reinforced robust casing designed for IP65
- Resistive touch screen technology (glove compatible, not dust/water sensitive)
- High storage capacity -128GB SSD
- One internal battery & one hot-swappable battery
- Up to eight group configurations
- Real-time with up to 64 elements for code compliant inspections



Panther 2

M2M Panther™ is a phased array equipment designed for both desktop and industrial applications, offering unparalleled performance in a compact unit. Its highest data transfer rate(320 MB/s) and complete set of TFM imaging techniques makes it the ultimate tool for R&D and procedure qualification.

Salient Features:

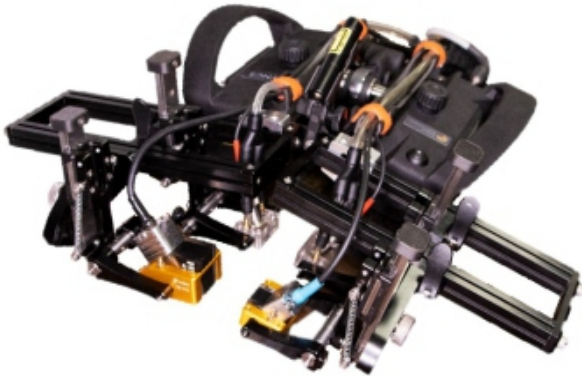
- 3D CAD configuration and rendering
- Data files compatible with both CIVA and ULTIS analysis software.
- Additional Software Development Kit (SDK) to customize application-based software
- Interface for a fully automated inspection solution.





Manual & Motorized Scanners

LYNCS - Modular Scanner



LYNCS is an advanced modular ultrasonic inspection scanner that has been designed by experts to provide Phased Array (PAUT) corrosion mapping & PAUT/TOFD weld integrity assessment.

TOFD Scanners



Caliper



Duo



Swift

Phased Array Scanners



C-Clamp



Bracelet



NozzleScan

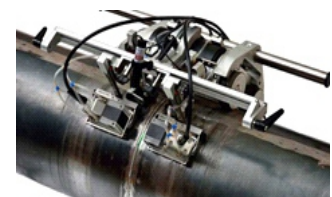
Multiple TOFD/Phased Array Scanners



MultiMag



MagMan



SAW Bug



Pulser Receivers

JSR Ultrasonics offers a complete range of high frequency pulser/receivers.

The **DPR300** is a Manual / Digital controlled ultrasonic pulser/receiver available in 35 MHz, 50 MHz, and 60 MHz options & adjustable 100 V to 900 V pulser power supply.

The **DPR500** DUAL Pulser/Receiver is the first dual channel, modular instrument consisting of two complete pulser/receivers integrated into one unit. Available in 500 MHz, 300 MHz, and 50 MHz options.

The **PRC50** is a versatile single-channel Pulser-Receiver on a half-length PCI card. The PRC50 is provided with a turnkey control software program for Windows, and a SDK to create custom Windows applications.

Ultrasonic Probes



Phased Array Probes



TOFD Probes & Wedges



TULA, LIMBO TOFD & i-TOFD



RTD Probes



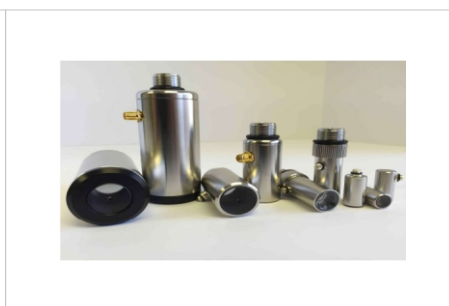
Normal Incident Shear Wave



Flexible Probes



Immersion Transducers



High Frequency Transducers



High Temperature Probes



Sonyks Guided Wave Testing Tool



Salient Features:

- 1st Guided Wave (GW) instrument with full onboard data analysis - No need for a secondary laptop
- Compatible with all other commercial piezo GW equipment
- Onboard pump and full diagnostics - Improved reliability and data quality
- Large high-quality touchscreen
- Lightweight and compact

Magneto-Tool for 1" to 4" Pipes

Salient Features:

- Medium Range UT broadens the application of Guided Wave Testing
- Reduced dead zone of the Magneto Tools increase coverage on short lengths
- Tuned to different frequencies for different applications
- Light weight & low profile

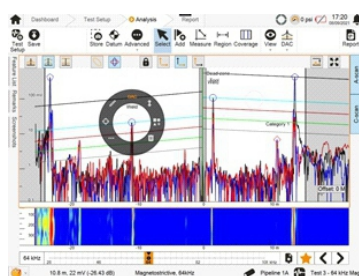
Piezo-Tool for 6" to 72" Pipes



Salient Features:

- Lightest and most flexible tool
- Quick and simple mounting for most pipes
- Single connector with auto-tool recognition
- Increased transducers around the pipe
- Broadest frequency range with no need to change spacing

Comprehensive data at your fingertips



Ultrasonic Tank Shell Inspection

The **Silverwing Swift U and Scorpion 2** dry-coupled remote-access (up to 50 m) ultrasonic crawler bring major efficiency and data improvements to tank shell inspections & in-service inspection of the assets.

Applications

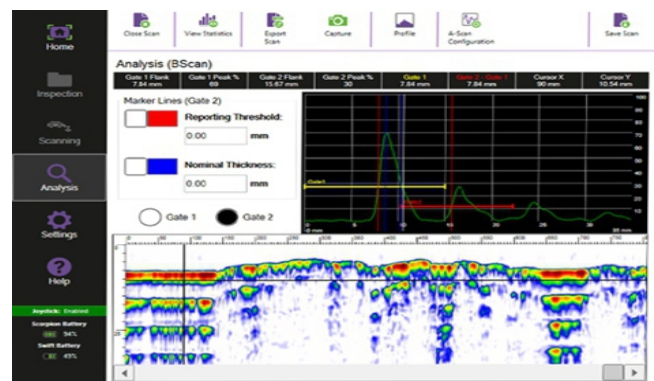
- Storage tank shell
- Storage tank roof
- Vessels
- Offshore installations



R-scan

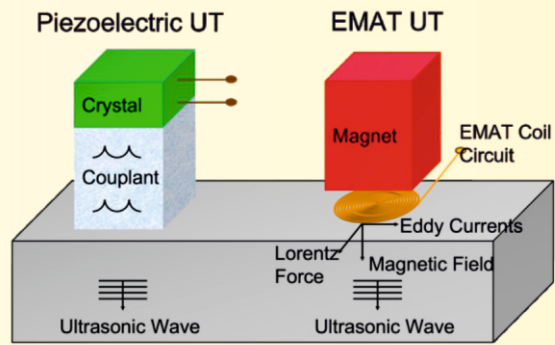
The unique dry-coupled 5 MHz ultrasonic wheel probe eliminates the need for couplant or constant water supply & is capable of measuring material thickness ranging from 2.5 mm up to 100 mm

Swift GO Data Acquisition Software



The software features several robust data capture, analysis, and reporting tools. Users can review saved data at any time with active A-scan and B-scan displays. The full-amplitude B-scan mode helps characterize wall loss. Export options include CSV files, A-scan, and B-scan images, or as CMX files, which you can then import in CMAP inspection management software.

EMAT Solutions



EMAT technology is an ultrasonic testing method that differs from the traditional piezoelectric transducers in the way the sound is generated. An EMAT consists of a magnet & a coil of wire and relies on electromagnetic acoustic interaction for elastic wave generation. Using Lorentz forces & magnetostriction, the EMAT & the metal test surface interact & generate an acoustic wave within the material. The material being inspected is its own transducer, eliminating the need for liquid couplant.

Primo SC



Salient Features:

- 1 to 8 channels for normal beam EMAT applications
- Up to 1000Vpp per channel, 1 to 3 cycles and up to 3000 PRF for scanning speeds greater than 1 m/s with 1mm resolution
- Self-contained IP54 industrial enclosure that can be located anywhere near the point of inspection. NDT-Web user-interface broadcast via wireless and/or Ethernet connection to any external device -PC, Tablet- running any operating system

Volta



VOLTA is a high power 2-channel portable ultrasonic instrument designed for Electro Magnetic Acoustic Transducer (EMAT)

Salient Features:

- 2 Ultrasonic Channels for EMAT applications ranging from 20 kHz to 8 Mhz.
- 1,100 Vpp and 6 kW of peak power per channel, 1 to 10 cycles.
- NDT-Web user interface and seamless integration with NDT link portal.

Sensors

Innerspec offers a great variety of standard and custom EMAT & DCUT (Dry-Coupled UT) sensors & accessories



Boiler Inspection System

The temate TG-IS(B) is designed for detecting & measuring wall loss, Hydrogen Corrosion Cracking (HCC), & caustic gauging in boiler tubes.

Salient Features:

- Non-contact EMAT technique.
- Permits 100% inspection of boilers instead of spot checking at up to 15cm/s of scanning speed.
- Ultrasonic EMAT technique provides accurate thickness readings with minimum surface preparation.
- Sensor with integrated encoder and light indicators for fast visual alert to the operator.
- Exclusive boiler mapping software application permits easy visualization of boiler walls with results of inspection for fast analysis and interpretation.





Eddy Current Testing

Ectane 3

The most popular multi-technology test instrument on the market. Available in three different array configurations: 64, 128, or 256 elements.



Technologies

Ectane 3 build-in capabilities to work with any combination of the listed testing technologies.

- Eddy Current Testing (ECT)
- Eddy Current Array (ECA)
- Tangential Eddy Current Array (TECA)
- Remote-field Testing (RFT)
- Remote-field Array(RFA)
- Near-field Testing (NFT)
- Near-filed Array (NFA)
- Magnetic Flux Leakage (MFL)
- Internal Rotating Inspection System (IRIS)
- Ultrasonic Testing

Magnifi

Eddyfi Magnifi is a constantly evolving, integrated electromagnetic inspection data acquisition and analysis software. It boasts an intuitive graphical user interface (GUI) suited to modern devices, powerful reporting function, and data management, as well as simple inspection configuration.

Probe Pusher System-PROBOT



The probe pusher system is designed to enhance the operation of tubing probes, configure & control the Probot with Magnifi.

TubePro

Using Ectane 3 with Magnifi & TubePro makes your tubing data acquisition, analysis, & reporting easy. The setup and tube list wizard enable you to instantly build & acquire your tube bundle. The assisted data analysis feature delivers high-quality reports including all the 2D & 3D tube mapping and other information.

Reddy ECA



It's a portable electromagnetic NDT system for rapid crack and corrosion assessment. Reddy is available 32/64/128 ECA Channels to drive ECA & tangential ECA (TECA) Probes. All models also comes with a MFL option to drive PipeScan HD.

ECA & TECA Probes



Spyne is an adaptable surface Eddy Current Array (ECA) screening tool.



I-Flex & T-Flex Probes are specifically designed to fit complex geometries.



The ECA DefHi can detect & size typical defects in any orientation.



The Sharck HR & Sharck Probes designed for the depth sizing of surface-breaking linear indications.



ECA Gear Probes are designed for varying tooth profile shapes & sizes.



ECA Padded Probes are perfect for examining weld beads, as well as transition & heat-affected zones.

Reddy AC & Tubing ECT

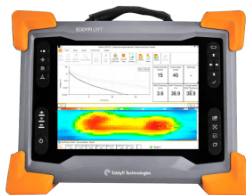


Eddyfi Reddy® is the solution designed to replace the wide range of aging ECT instruments for air-conditioner and ECT tubing inspections.



Pulsed Eddy Current (PEC)

Eddyfi Lyft can scan through thick insulation, as well as aluminium, stainless steel, and galvanized steel weather jackets.



Applications

- Corrosion Under Insulation (CUI)
- Corrosion Under Fireproofing (CUF)
- Insulated pipes and vessels
- In-service scab corrosion assessment, no need to remove the scale
- In-service inspection of storage tank annular plates- underwater and splash zone structures
- Marine vessels

Pulsed Eddy Current (PEC) Probes



Single-Element PEC Probe



PEC Probe For Galvanized Steel Cladding



Underwater PEC Probes



Tank Floor PEC Probe

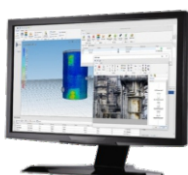


PEC Array Probe



Six-Channel PECA Probe

SurfacePro 3D Advanced 3D Visualization And Reporting Software



SurfacePro 3D is an advanced visualization & reporting software designed to automatically create components & overlay stitched C-scan data. Easily import, export, create & edit report templates.



Alternating Current Field Measurement (ACFM)

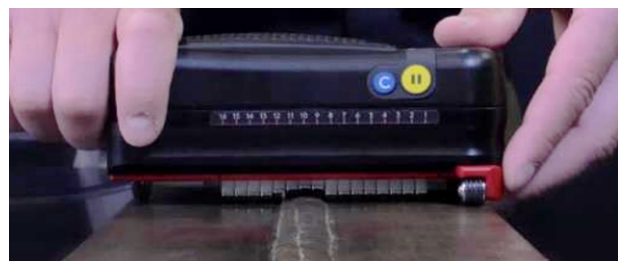
Amigo 2/Amigo 2SE

TSC Amigo2's/Amigo2SSE main focus is detecting & sizing surface-breaking cracks in a variety of metal components through paint & coatings.



Applications

- Weld inspection: w/ standard probes & single-pass array probes
- One or Two-person operation (e.g., confined spaces)
- High-Temperature applications
- Inspection Through Thick coatings
- Thread inspection & Splash zone inspection



U41 ACFM Subsea Inspection System



ACFM technology has been used globally as the method of choice for the detection & sizing of subsea surface-breaking cracks. Recognized & approved by many certification bodies, including DNV, ABS & Lloyds, the technique has been used successfully against traditional uncomputerized & more user dependent methods, such as MPI.



Magnetic Flux Leakage (MFL)

Tank Floor Scanner- FloormapX

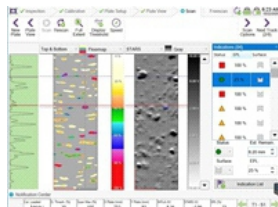


Key Features

- Maximum coverage, including critical zone.
- Flexible scanning, one scanner with three scan modes
- Inspect thicker plates up to 20 mm (3/4 in) thick
- EEMUA 159 and API 653 compliance

SIMS GO & SIMS PRO

An intuitive software designed to increase workflow efficiency and produce accurate & comprehensive tank inspection data.



Wire Rope Tester- Intros



INTROS enables simultaneously accurate measurement of loss of metallic area (LMA) & detection of outer & inner localized flaws (LF), such as broken wires, strands, pitting corrosion in wire ropes.

Intros Auto



INTROS AUTO designed for non-destructive inspection of steel wire ropes with automatic data interpretation. Results of automatic data interpretation display in "traffic light" mode. Green light informs the operator the opportunity to continue rope operation; yellow light warns against certain level of rope deterioration – both LMA and LF & is adjustable; red light alerts that rope may no longer be used.

Pipe Inspection Solution-PipeScan HD



The Pipescan HD is the highest resolution MFL scanner on the market. With a high Probability of Detection. It is easily compatible with Ectane 2 (ECA), Swift M & Reddy-32 M.

Key Features

- Speed: Scanning, data analysis & reporting in one quick workflow
- Highest resolution-easy to understand C-scan imaging
- High POD with defects down to 1 mm (0.04 in) identified
- No Couplant & minimal surface preparation required
- Flexible heads fit a full range of pipe and vessel sizes

Steel Cord Belt Scanner



Steel-cord conveyor belt scanner INTROCON is designed for non-destructive inspection of steel cord during operation of the conveyor belt. INTROCON comprises basic unit, scanner & Wintrocon software. The operation is based on eddy current principle of non-destructive testing



Remote Visual Inspection Cameras

Low Cost Push Rod Cameras

We offer low-cost push rod camera from Ritec, Germany. The push rod cameras are available in four models.

Salient Features:

- TFT-monitor 5.6"
- Stainless steel camera housing with
- Flexible Spring Connection.
- Wide angle lens with sapphire protection.
- LED-lighting.
- Waterproof up to 1 bar.



Model	Ideal for Pipe Diameter	Max. Cable Length
RI 1320 SLC	15mm to 40mm	20 meters
RI 2020 SLC	25mm to 80mm	20 meters
RI 25 SLC	30mm to 150mm	25 meters
RI 25 VB SLC	30mm to 150mm	25 meters

Sewer Inspection Camera



MiniLite	MainLite	Aspecta
IBAK MiniLite is a compact push rod camera system for inspection of, designed to cover as wide range of application	A new compact camera tractor system from IBAK, available for both vehicle installation and a portable system	The Aspecta is a manhole zoom camera with which you can inspect associated sewers from the manhole

Pan & Tilt Camera - Visioprobe

A complete solution including cameras, control unit and mobility accessories, Visioprobe products are robust, easy to handle and interchangeable. Available in a variety of sizes to fit any application, Visioprobe cameras are among the most compact and rugged while offering unique image quality and features.



- 28 mm , 45 mm , 90 mm Visioprobe Compact Camera

Industrial Videoscope



Inspector S



Inspector Pro

Inspector S industrial videoscope is equipped with the latest technology of high-definition video imaging components, resolution up to 1280x720, available pixels up to 921,600.00, high-intensity power light source and excellent visual processor

In addition to the above parameters **Inspector Pro** comes with the latest technology of HD imager + freely interchangeable probes.

Radiation Resistant Camera Solutions

D40 Inspection Camera

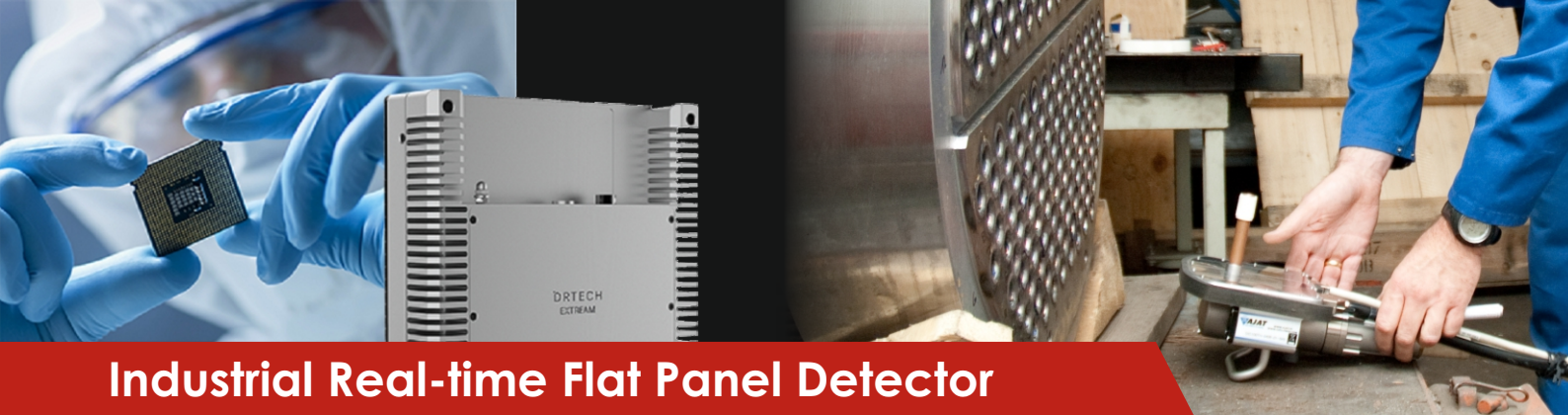
Considered by many in the industry as the gold standard of radiation-proof cameras, Diakont's D40 offers the perfect mix of high resolution, small size & high radiation tolerance required for reliable, precision performance in an extreme environment.



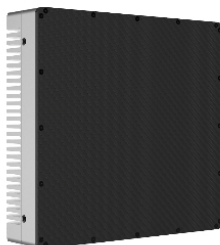
Proton 3.0 Camera System

Ideally suited for virtually all nuclear plant underwater activities, the Proton 3 HD PTZ is quickly becoming the handiest camera system on the refuel floor. Compared with other solutions in its radtolerance class, the Diakont Proton 3 system provides superior HD color resolution, at an economical price.





Industrial Real-time Flat Panel Detector



EXT 1616R

Salient Features:

- Pixel Pitch 98 μ m, High Resolution, High Quality Image
- Fast Frame Rate
- High Energy Range
- Durable & Rugged Design



EXT 4343R

Salient Features:

- High Resolution, High Quality Image
- Large Field of View
- Fast Frame Rate
- High Energy Range
- Exceptional Reliability & Rugged Design



EXT 2832R

Salient Features:

- High Resolution, High Quality Image
- Ultra High Sensitivity
- Fast Frame Rate
- Scalable FoV (Field Of View)
- Suitable for wide range of x-ray energies
- Pre processing and calibration on HW

NDPro Image Acquisition Software

NDPro is a complete digital image processing console software specialized for the digital X-ray detector EXTREAM series. NDPro makes easier and more convenient to operate digital detectors on industrial field. NDPro provides the image acquisition, storage, management and essential functions for industrial field engineer.

NDPro: Workflow



Tube To Tube Sheet Weld - Digital Radiography Solution

VX Exchanger RT is a complete system designed for radiographic testing of the tube-to-tube-sheet welded joints with only one-sided access from the tube-sheet side. 1500 joints per 8-hours shift (working in a 2-men team) Under 2 m controlled area VX Exchanger RT digital system powered by the Isee! Professional software fully replaces the classic film-based method & can be used for metallic materials up to a tube diameter of about 7mm - 80 mm ID tubes. 0.1 mm defect sensitivity in steel.

Salient Features:

- High efficiency custom-made digital detector
- Pen anode metal-ceramic X-ray source & High-voltage generator
- Computer with (optional) high-quality evaluation monitor
- Isee! Professional software with add-ons for controlling the X-ray source & digital detector, image processing & evaluation, report generation, & archiving (optional)





NDE Educational & Flawed Specimens

Standard Specimens

Salient Features:

- Have a tolerance of ± 0.150 " (4mm).
- Includes all standard kit specimens and all UT & MT/PT practical exam specimens.
- Designed to enhance the training and development of new and veteran NDT technicians.
- Basic Document Package with CAD drawings is included with each kit or exam specimen.

Advanced Specimens

Salient Features:

- Have a tolerance of ± 0.080 " (2mm).
- Includes all advanced specimens, API-UT-1 kit & all ASME section XI appendix VII specimen bank.
- Designed to enhance the training & qualification of level I, II, & III personnel with regards to SNT-TC-1 A, EN473 & PCN.
- Document package with CAD drawings is included with each kit or individual Advanced Specimen.

Critical Specimens:

Salient Features:

- Have a tolerance of ± 0.040 " (1mm).
- Includes all ASME Section XI Appendix VIII specimens & most of the custom designed specimens.
- Designed to customer specifications for their training & qualification of NDT personnel, equipment, and procedures.
- Detailed documentation is included with specimens



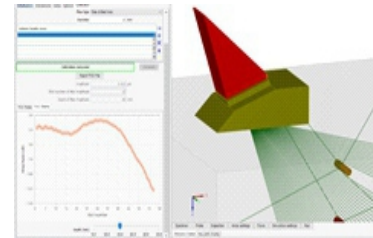
Testing tools for the aerospace & aviation industry

- Reference Standards (Boeing, Airbus, Bombardier, McDonnell Douglas, Military, custom)
- Eddy Current Probes
- Ultrasonic Transducers
- Custom kit boxes



NDT Simulation Software-CIVA

EXTENDE
CIVA



The simulation software CIVA is an expertise platform dedicated to non-destructive testing. It is composed of simulation, imaging & analysis modules, which allow conceiving or optimizing inspection techniques & predicting their performances in realistic NDT configurations.

CIVA Education



A simplified version of CIVA is also available, called CIVA Education. This version, very easy to use, has been adapted for universities & training centres to help teaching & understanding the physical phenomena involved in NDT. The simple, realistic & interactive interface of CIVA education makes it easy to highlight the main phenomena & understand typical NDT results in a visual & comprehensive environment. It comprises of 3 Modules: UT Module, ECT Module & RT Module.



TraiNDE - Innovative Tool for the Training of NDT Inspectors



TraiNDE UT is a manual ultrasonic testing simulator that helps trainers teach operators on ultrasonic testing. It reproduces real inspection conditions for a number of applications. The dynamic displays & probe handling mimic real inspection behaviours. The operator handles a dummy probe on the digital mock-up.

TraiNDE RT is a virtual reality software associated with a database of film results, which reproduces the inspection conditions for numerous applications (welded tubes and plates, cast specimens, X-ray and Gamma tubes, several films) taking into account the IQI, lead letters, and X-ray flexible rulers.

About Us

Keeping the vision of "Make in India", M/s. Arora Technologies (P) Limited is focusing on Manufacturing and Distribution of NDT Products & Accessories.

Our vision is to Innovate, design and manufacture NDT Products, Systems and Accessories for global markets by incorporating Quality & Excellence in our DNA. We are committed to build long-term relationships with our customers and pursue our business Through innovation, latest Technology & unrelenting quest for excellence.



Arora Technologies (P) Limited

Plot No. D-183/8, MIDC, TTC Nerul, Navi Mumbai, Maharashtra 400706, India
T: +91-22-6138 0600 | E: info@arorandt.com | W: www.arorandt.com