



**XRH111**<sup>ECO</sup>

# The basic inspection cabinet



**VisiConsult**  
X-ray Systems & Solutions

Designed for cost-sensitive applications

Compact layout and small footprint

Optimized for visual X-ray inspection

Full image quality and software features

Robust industrial design with long lifetime



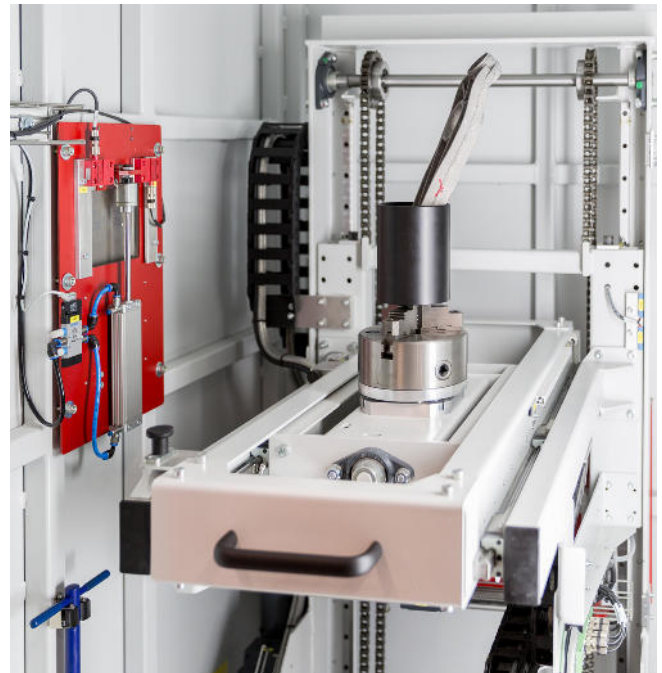
**ARORA**  
NDT Products & Accessories

**Arora Technologies (P) Limited**  
619 & 620 The Great Eastern Galleria,  
Plot No. 20, Sector 4, Nerul, Navi  
Mumbai 400 706, India  
T: +91-22-6138 0600, 2770 3913,  
2772 9077 | E: info@arorandt.com |  
W: www.arorandt.com

## XRH111<sup>ECO</sup> – Reduce investment costs

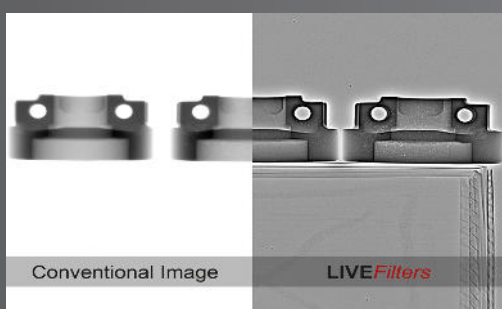
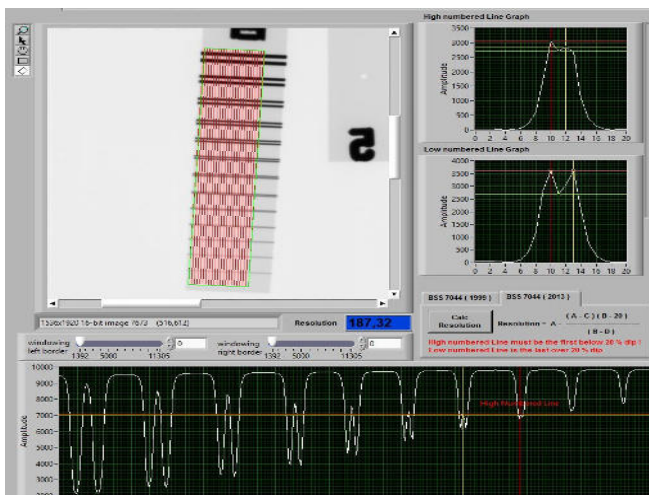
X-ray inspection is a necessary requirement to meet modern production standards. For many companies in cost-sensitive markets the investment into a cabinet or inspection services is a major cost factor. Designed purely for visual X-ray inspection the XRH111<sup>ECO</sup> is a budget cabinet for energies up to 225kV. The pure focus on basic features results in an unmatched cost-benefit ratio. While still using high quality components, VisiConsult removed advanced features like CNC controllable axes, ADR and CT to reduce the overall price. Why should you pay for something you do not need?

This concept creates an ideal cabinet for small companies, emergent markets or cost sensitive industries. To maintain the known inspection quality, the XRH111<sup>ECO</sup> is optimized for manual X-ray inspection of small to medium parts. The proven Xplus image enhancement software offers the same filters, measurement tools and archiving options as any other VisiConsult system. If necessary, the modular design of the system allows to add more advanced hardware features at any time.



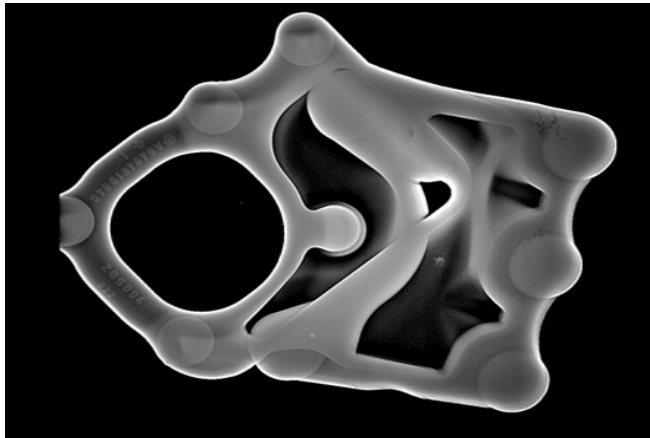
## Modular design and high quality

For a maximum safety the cabinet is certified by the German TÜV and CE to ensure no X-ray leakage and fulfillment of all related standards. The robust industrial design, developed and produced in Germany, guarantees a long lifetime and low downtimes even in demanding conditions. The system is designed for ergonomic operation and easy loading of parts through the extendable part drawer. The fork lifter pockets and fast system setup procedure ensure a high mobility. This makes the system also the perfect choice for service companies that constantly have to move the system to different locations.



To find even the tiniest failures in test-parts our renowned image enhancement system *Xplus* has a broad portfolio of enhancement features to deliver sharp and noise-reduced images.

A combination of real-time noise reduction (*MotionDetect*) and image enhancement (*LiveFilters*) highlights defects that were not visible for the human eye before. This results in brilliant images during live inspection, while the high dynamic range allows to look into different material thickness at the same time.



## Xplus – Discover the Invisible

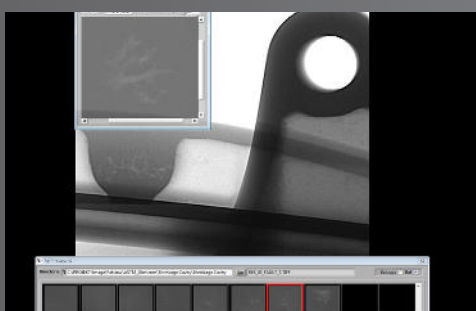
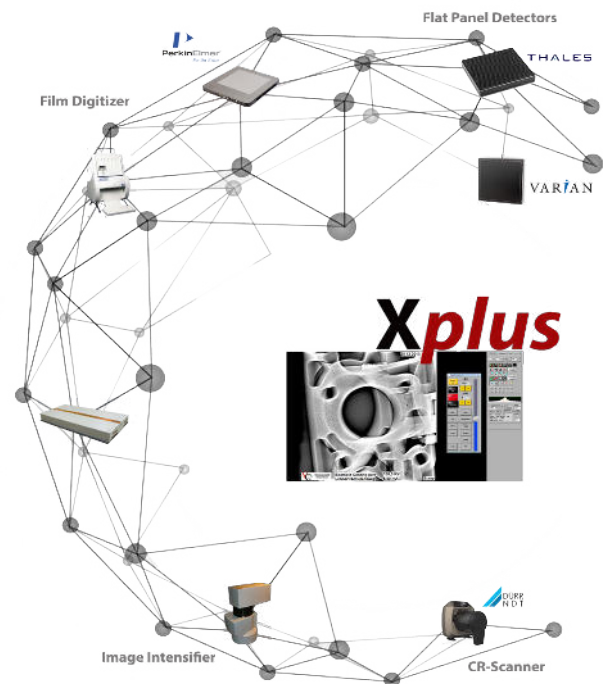
The core of the system is our in-house developed image enhancement system *Xplus* that sets new industry standards. Constant development and 25 years of experience combined with a maximum flexibility towards special process requirements help our customers to be a step ahead! Advanced features like overlay tools, macro generators, filter builders, live image enhancement, report toolkits, DICONDE integration, measurement tools and many more make the *Xplus* the most sophisticated software on the market.

It fulfills all major international industry standards like ASTM, EN17636-2, Boeing 7042/44, NADCAP and many more. *VisiConsult* is a highly agile and flexible solution provider. Therefore, special software or even hardware requirements can be easily implemented on customer demand!



## Broad choice of tubes and detectors

To provide the best inspection results *VisiConsult* supplies a big variety of X-ray components. Tube and detector can be freely combined depending on customer preferences or application requirements, which are determined through complex case studies. The portfolio includes maintenance free mono-blocks, micro, focus tubes and normal X-ray tubes, while detectors from renown brands like Perkin Elmer, Thales Varian and many more are available. Customizable filter-shutter units can be added to increase the image quality and extend the detector lifetime.



Classifying errors according to industry standards is a challenging task for operators. The *Xplus* offers many standard features like measurement tools, overlays, image enhancement and many more for precise decision assistance. All software functions can be easily automated into inspection sequences through a macro builder.

An optional module is the ASTM reference catalogue for all common materials. Sample defects can be reviewed and even projected in the image for an easy comparison.



The XRH111<sup>ECO</sup> offers an unmatched cost-benefit ratio for high quality visual X-ray inspection.



## XRH111<sup>ECO</sup> - technical specification

<b>Max. part size</b> (mm - Ø x height)	400 x 600
<b>Max. part weight</b> (kg)	25
<b>System size</b> (mm L x W x H)	1770 x 1407 x 2290
<b>System weight</b> (kg)	2800
<b>Energy</b> (kV)	160, 225
<b>Horizontal motion TX</b> (mm)	415
<b>Magnification TY</b> (mm)	340
<b>Focus Detector Distance FDD</b> (mm)	1225
<b>Focus Object Distance FOD</b> (mm)	600 - 940
<b>Vertical motion TZ</b> (mm)	660
<b>Manipulator tilt RX</b> (deg.)	+/- 20°
<b>Part rotation RZ</b> (deg.)	360° multiturn

*Dimensions and electrical values can vary depending on X-ray equipment. Cabinet in compliance to German and international radiation law. Dimensions can be customized in case of special requirements, especially in terms of part size.*



Your VisiConsult Sales Team!

**Connection values:** 3N PE, 400/230 V, 50/60 Hz, 6 kW  
**Ambient conditions:** Ambient +10° to +35°C

- Optimized for visual X-ray inspection
- Easy loading trough extendable drawer
- Highly mobile and fast setup time
- Developed for the automotive industry
- Four motor driven axis and manual magnification
- Intuitive operation for maximum efficiency
- Extensive archiving options including DICONDE



**VisiConsult** is a family owned company located in Northern Germany and is a specialist for customized and standard X-ray systems. All our products are developed and produced locally and delivered as turn-key solutions. This leads to cutting edge performance and a high flexibility. Our goal is to solve our customers' problems with tailored systems and guarantee a premium post-sales service.

More than 25 years of expertise in Security and classic Non Destructive Testing (NDT) markets like aerospace, automotive and many more lead to an unmatched experience in X-ray technology and result in a superior global service network.