

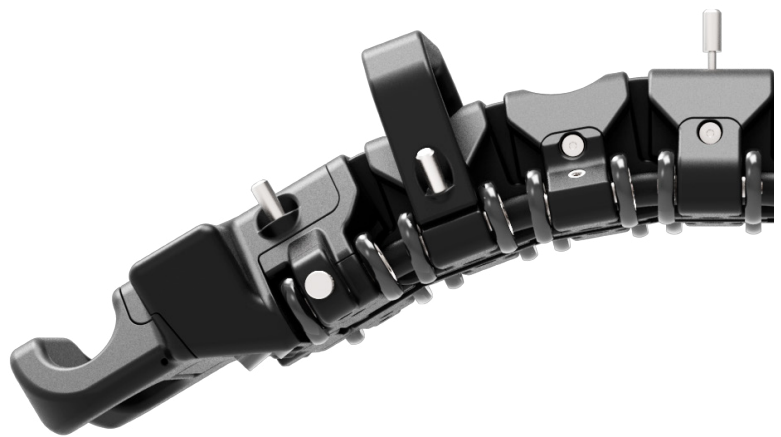


A faster, less operator-dependant, screening than PT/MT

- › Very high PoD: leave no crack behind
- › Repeatable and reliable results
- › Minimal surface preparation required; no need to remove coating
- › Data archiving
- › Compatible with a wide variety of flexible-PCB probes, coils diameters, and topologies

Spyne™

ENGINEERED FOR



COVERAGE	200 mm (8 in)
NUMBER OF CHANNELS REQUIRED	128
OUTER DIAMETER RANGE	150 mm (6 in) OD to flat surfaces
SMALLEST DETECTABLE DEFECTS	As small as 2mm (0.080")L x 1mm (0.040")D
MAX. MEASURABLE CRACK DEPTH	No depth sizing
SCAN SPEED	Up to 600 mm/s (24 in/s) <i>*With full data recording</i>
LIFT-OFF TOLERANCE	Up to 3 mm (0.120 in) <i>*Lift-off compensation to be available</i> <i>**Non-conductive coatings and paints, with monitoring and autocorrection</i>
MATERIALS	All pipeline alloys

## OTHER FEATURES

### Grid-As-U-Go™

Embedded spring-loaded encoder

Pre-calibration/calibration check tool

Combined with Magnifi: assisted detection and on-the-spot reporting

Control buttons for single operator use

Max. operating temperature: 150 °C (300 °F)

The information in this document is accurate as of its publication. Actual products may differ from those presented herein.

© 2019 Eddyfi NDT, Inc. Eddyfi, Grid-As-U-Go, Lyft, SmartPULSE, and their associated logos are trademarks or registered trademarks of Eddyfi NDT, Inc. in the United States and/or other countries. Eddyfi Technologies reserves the right to change product offerings and specifications without notice.

2019-03-20

[www.eddyfi.com](http://www.eddyfi.com)

[info@eddyfi.com](mailto:info@eddyfi.com)



# Sharck™ HR

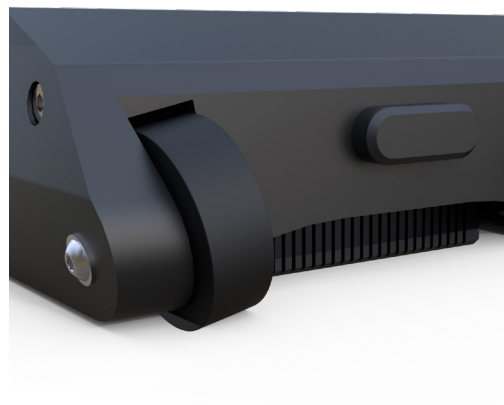


Simultaneous detection and depth sizing of longitudinal SCC in parent material on pipelines and ERW welds.

- › Very high POD
- › Repeatability at  $\pm 0.1$  mm
- › Assisted detection tool: allows the quick identification and positioning of deepest cracks among SCC colonies
- › Controls human factor
- › Fast
- › Data traceability

Sharck™ HR

ENGINEERED FOR



<b>COVERAGE</b>	71 mm (2.8 in)
<b>NUMBER OF CHANNELS REQUIRED</b>	64
<b>COMPATIBLE PIPE DIAMETERS (NPS)</b>	254–1220 mm (10–48 in)
<b>MIN. DETECTABLE LONGITUDINAL CRACK</b>	<ul style="list-style-type: none"> <li>› Length: 1.5 mm (0.060 in)</li> <li>› Depth: 0.25 mm (0.010 in)</li> </ul> <p><i>Results may vary according to crack location, lift-off, surface conditions, etc.</i></p>
<b>MAX. MEASURABLE CRACK DEPTH</b>	<p>3 mm (0.12 in)</p> <p><i>*Can detect deeper cracks</i></p> <p><i>**Cracks shorter than 4.5 mm can slightly be undersized</i></p>
<b>DEPTH SIZING ACCURACY</b>	<p>±10–15%</p> <p><i>*Presence of corrosion and high density may impact accuracy, results may vary according to crack location, lift-off, surface conditions, etc.</i></p>
<b>LONGITUDINAL RESOLUTION ON SCC</b>	Can resolve cracks distanced by 1.0 mm
<b>CIRCUMFERENTIAL RESOLUTION ON SCC</b>	Can resolve cracks distanced by 1.0 mm
<b>SCAN SPEED</b>	<p>Up to 600 mm/s (24 in/s)</p> <p><i>*With full data recording</i></p>
<b>LIFT-OFF TOLERANCE</b>	<p>Up to 1 mm (0.040 in)</p> <p><i>*Detection still possible with up to 2 mm of lift-off but accuracy on depth sizing may be affected</i></p> <p><i>**Non-conductive coatings and paints, with monitoring and autocorrection</i></p>
<b>MATERIALS</b>	Permeability compensation for X42, X46, X52, X56, X60

The information in this document is accurate as of its publication. Actual products may differ from those presented herein.

© 2019 Eddyfi NDT, Inc. Eddyfi, Grid-As-U-Go, Lyft, SmartPULSE, and their associated logos are trademarks or registered trademarks of Eddyfi NDT, Inc. in the United States and/or other countries. Eddyfi Technologies reserves the right to change product offerings and specifications without notice.

2019-03-20

[www.eddyfi.com](http://www.eddyfi.com)

[info@eddyfi.com](mailto:info@eddyfi.com)



# Sharck HR Butt Weld



Featuring all advantages of the Sharck HR but managing what it can't mechanically do.  
Detection and depth sizing of:

- › Longitudinal SCC on pipe diameters  $\leq 254$  mm (10 in)
- › SCC along seam welds
- › Cracks in A.O. Smith Flash welds
- › SCC in dents
- › Circumferential SCC
- › Circumferential SCC in girth welds

Sharck HR Butt Weld

ENGINEERED FOR



<b>COVERAGE</b>	37 mm (1.46 in)
<b>NUMBER OF CHANNELS REQUIRED</b>	64
<b>COMPATIBLE PIPE DIAMETERS (NPS)</b>	152–1220 mm (6–48 in)
<b>MIN. DETECTABLE LONGITUDINAL CRACK</b>	<ul style="list-style-type: none"> <li>› Length: 1.5 mm (0.060 in)</li> <li>› Depth: 0.25 mm (0.010 in)</li> </ul> <p><i>Results may vary according to crack location, lift-off, surface conditions, etc.</i></p>
<b>MAX. MEASURABLE CRACK DEPTH</b>	<p>3 mm (0.12 in)</p> <p><i>*Can detect deeper cracks</i></p> <p><i>**Cracks shorter than 4.5 mm can slightly be undersized</i></p>
<b>DEPTH SIZING ACCURACY</b>	<p>±10–15%</p> <p><i>*Presence of corrosion and high density may impact accuracy, results may vary according to crack location, lift-off, surface conditions, etc.</i></p>
<b>LONGITUDINAL RESOLUTION ON SCC</b>	Can resolve cracks distanced by 1.0 mm
<b>CIRCUMFERENTIAL RESOLUTION ON SCC</b>	Can resolve cracks distanced by 1.0 mm
<b>SCAN SPEED</b>	<p>Up to 600 mm/s (24 in/s)</p> <p><i>*With full data recording</i></p>
<b>LIFT-OFF TOLERANCE</b>	<p>Up to 1 mm (0.040 in)</p> <p><i>*Detection still possible with up to 2 mm of lift-off but accuracy on depth sizing may be affected</i></p> <p><i>**Non-conductive coatings and paints, with monitoring and autocorrection</i></p>
<b>MATERIALS</b>	Permeability compensation for X42, X46, X52, X56, X60

The information in this document is accurate as of its publication. Actual products may differ from those presented herein.

© 2019 Eddyfi NDT, Inc. Eddyfi, Grid-As-U-Go, Lyft, SmartPULSE, and their associated logos are trademarks or registered trademarks of Eddyfi NDT, Inc. in the United States and/or other countries. Eddyfi Technologies reserves the right to change product offerings and specifications without notice.

2019-03-20

[www.eddyfi.com](http://www.eddyfi.com)

[info@eddyfi.com](mailto:info@eddyfi.com)



# Sharck Pencil HR



## Detection and depth sizing of:

- › SCC in deep dents
- › SCC close to girth or spiral welds
- › Long cracks at seam welds toes

Sharck Pencil HR

ENGINEERED FOR



<b>COMPATIBLE PIPE DIAMETERS (NPS)</b>	All pipe diameters
<b>MIN. DETECTABLE LONGITUDINAL CRACK</b>	<ul style="list-style-type: none"> <li>&gt; Length: 1.5 mm (0.060 in)</li> <li>&gt; Depth: 0.25 mm (0.010 in)</li> </ul> <p><i>Results may vary according to crack location, lift-off, surface conditions, etc.</i></p>
<b>MAX. MEASURABLE CRACK DEPTH</b>	<p>3 mm (0.12 in)</p> <p><i>*Can detect deeper cracks</i></p> <p><i>**Cracks shorter than 4.5 mm can slightly be undersized</i></p>
<b>DEPTH SIZING ACCURACY</b>	<p>±10–15%</p> <p><i>*Presence of corrosion and high density may impact accuracy, results may vary according to crack location, lift-off, surface conditions, etc.</i></p>
<b>SCAN SPEED</b>	<p>Up to 600 mm/s (24 in/s)</p> <p><i>*With full data recording</i></p>
<b>LIFT-OFF TOLERANCE</b>	<p>Up to 1 mm (0.040 in)</p> <p><i>*Detection still possible with up to 2 mm of lift-off but accuracy on depth sizing may be affected</i></p> <p><i>**Non-conductive coatings and paints, with monitoring and autocorrection</i></p>
<b>MATERIALS</b>	Permeability compensation for X42, X46, X52, X56, X60

The information in this document is accurate as of its publication. Actual products may differ from those presented herein.

© 2019 Eddyfi NDT, Inc. Eddyfi, Grid-As-U-Go, Lyft, SmartPULSE, and their associated logos are trademarks or registered trademarks of Eddyfi NDT, Inc. in the United States and/or other countries. Eddyfi Technologies reserves the right to change product offerings and specifications without notice.

2019-03-20

[www.eddyfi.com](http://www.eddyfi.com)

[info@eddyfi.com](mailto:info@eddyfi.com)





# Sharck Butt Weld G2



Detection and depth sizing of individual cracks anywhere on pipes, especially in seam and girth welds (crown, toes and heat affected zones).

- › Cracks detection in all orientation within a single pass
- › Depth sizing on cracks down to 7 mm in pipe walls
- › High lift-off tolerance

Sharck Butt Weld G2

ENGINEERED FOR



<b>COVERAGE</b>	<b>53 mm (2.1 in)</b>
<b>NUMBER OF CHANNELS REQUIRED</b>	<b>64</b>
<b>COMPATIBLE PIPE DIAMETERS (NPS)</b>	<b>254–1220 mm (10–48 in)</b>
<b>MIN. DETECTABLE LONGITUDINAL CRACK</b>	<ul style="list-style-type: none"> <li>› Length: 3 mm (0.120 in)</li> <li>› Depth: 0.5 mm (0.020 in)</li> </ul> <p><i>Results may vary according to crack location, lift-off, surface conditions, etc.</i></p>
<b>MAX. MEASURABLE CRACK DEPTH</b>	<p><b>7 mm (0.275 in)</b></p> <p><i>*Can detect deeper cracks</i></p> <p><i>**Dynamic compensation for cracks down to 6 mm in length</i></p>
<b>DEPTH SIZING ACCURACY</b>	<p><b>±10–20%</b></p> <p><i>*Weld roughness may have an impact on depth sizing</i></p>
<b>LENGTH SIZING ACCURACY</b>	<p><b>±2 mm (0.08 in)</b></p> <p><i>Typical when using 0.5 mm (0.02 in) scan resolution</i></p>
<b>SCAN SPEED</b>	<p><b>Up to 200 mm/s (8 in/s)</b></p> <p><i>*With full data recording</i></p>
<b>LIFT-OFF TOLERANCE</b>	<p><b>Up to 3 mm (0.120 in)</b></p> <p><i>*Detection still possible with up to 3 mm of lift-off but accuracy on depth sizing may be affected</i></p> <p><i>**Non-conductive coatings and paints, with monitoring and autocorrection</i></p>
<b>MATERIALS</b>	<b>Permeability compensation for X42, X46, X52, X56, X60</b>

The information in this document is accurate as of its publication. Actual products may differ from those presented herein.

© 2019 Eddyfi NDT, Inc. Eddyfi, Grid-As-U-Go, Lyft, SmartPULSE, and their associated logos are trademarks or registered trademarks of Eddyfi NDT, Inc. in the United States and/or other countries. Eddyfi Technologies reserves the right to change product offerings and specifications without notice.

2019-03-20

[www.eddyfi.com](http://www.eddyfi.com)

[info@eddyfi.com](mailto:info@eddyfi.com)



# Sharck Pencil G2



Detection and depth sizing of individual cracks anywhere on pipes, especially in seam and girth welds toes, single crack or low-density SCC in dents.

Sharck Pencil G2

ENGINEERED FOR



<b>COMPATIBLE PIPE DIAMETERS (NPS)</b>	All pipe diameters
<b>MIN. DETECTABLE LONGITUDINAL CRACK</b>	<ul style="list-style-type: none"> <li>&gt; Length: 3 mm (0.120 in)</li> <li>&gt; Depth: 0.5 mm (0.020 in)</li> </ul> <p><i>Results may vary according to crack location, lift-off, surface conditions, etc.</i></p>
<b>MAX. MEASURABLE CRACK DEPTH</b>	<p>7 mm (0.275 in)</p> <p><i>*Can detect deeper cracks</i></p>
<b>DEPTH SIZING ACCURACY</b>	<p>±10–20%</p> <p><i>*Weld roughness may have an impact on depth sizing</i></p>
<b>SCAN SPEED</b>	<p>Up to 200 mm/s (8 in/s)</p> <p><i>*With full data recording</i></p>
<b>LIFT-OFF TOLERANCE</b>	<p>Up to 3 mm (0.120 in)</p> <p><i>*Detection still possible with up to 3 mm of lift-off but accuracy on depth sizing may be affected</i></p> <p><i>**Non-conductive coatings and paints, with monitoring and autocorrection</i></p>
<b>MATERIALS</b>	Permeability compensation for X42, X46, X52, X56, X60

The information in this document is accurate as of its publication. Actual products may differ from those presented herein.

© 2019 Eddyfi NDT, Inc. Eddyfi, Grid-As-U-Go, Lyft, SmartPULSE, and their associated logos are trademarks or registered trademarks of Eddyfi NDT, Inc. in the United States and/or other countries. Eddyfi Technologies reserves the right to change product offerings and specifications without notice.

2019-03-20

[www.eddyfi.com](http://www.eddyfi.com)

[info@eddyfi.com](mailto:info@eddyfi.com)



# Sharck Probes – Summary

PROBE	APPLICATION	DETECTION	SIZING	SIZEABLE DEPTH RANGE	MINIMUM CRACK LENGTH	COVERAGE
	Cracks detection in all orientations	●		N/A	3 mm (0.12 in)	200 mm (8 in)
	Axial SCC in parent material and ERW welds	●	●	0.25–3 mm (0.01–0.12 in)	1.5 mm (0.06 in)	71 mm (2.8 in)
	<ul style="list-style-type: none"> <li>› Axial SCC on pipe diameters from 152 mm (6 in)</li> <li>› SCC along seam welds</li> <li>› A.O. Smith Flash welds</li> <li>› SCC in dents</li> <li>› Circ. SCC</li> </ul>	●	●			37 mm (1.4 in)
	<ul style="list-style-type: none"> <li>› SCC in deep dents</li> <li>› SCC next to welds</li> <li>› Long cracks along seam welds toes</li> </ul>	●	●			Single element
	<ul style="list-style-type: none"> <li>› Detection and depth sizing of individual cracks in welds (cap, toes and HAZ)</li> <li>› Cracks detection in all orientations</li> </ul>	●	●	0.5–7 mm (0.02–0.28 in)	3 mm (0.12 in)	53 mm (2.1 in)
	<ul style="list-style-type: none"> <li>› Detection and depth sizing of individual cracks in welds (cap, toes and HAZ)</li> <li>› Long cracks along seam welds toes</li> </ul>	●	●			Single element