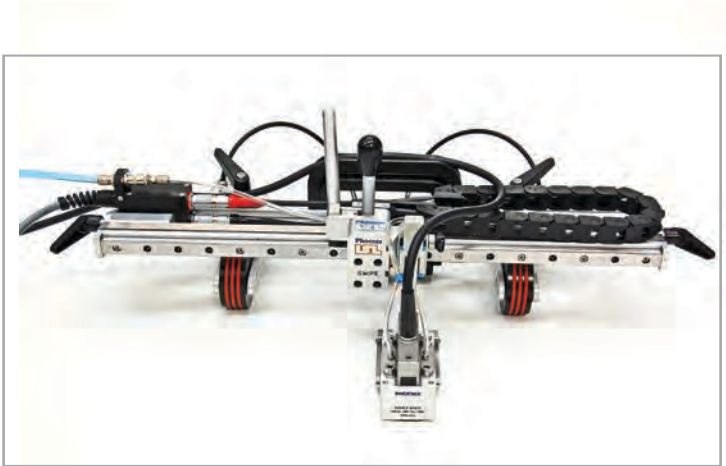


# Swipe

## Manual X-Y Scanner



Swipe scanner

Swipe from Phoenix ISL is a two axis manually operated X-Y scanner. It enables quick C-Scan inspection of flat or curved components with unlimited travel in one direction. Swipe is suitable for inspection with ultrasonic phased array, conventional pulse-echo or eddy current techniques.

### Scanner Specification

Weight:	Max. 5kg <i>(dependent on configuration)</i>
Encoder resolution:	X = 10 steps/mm Y = 1000 steps/mm
Encoder connector:	Any

The Swipe scanner is fully encoded on both axis and can be configured to operate with any probe and wedge combination.

The innovative design allows the swipe arm to be changed to suit the coverage needed from 400mm up to 800mm. The wheels allow unlimited scanning in the rolling direction.

The scanner incorporates a quick-release brake to ensure stability whilst performing a scan. An optional accessory to the Swipe is a three button junction box that can be configured to start, pause and save scans providing the user with more control without the need to leave the scanner.

### Benefits

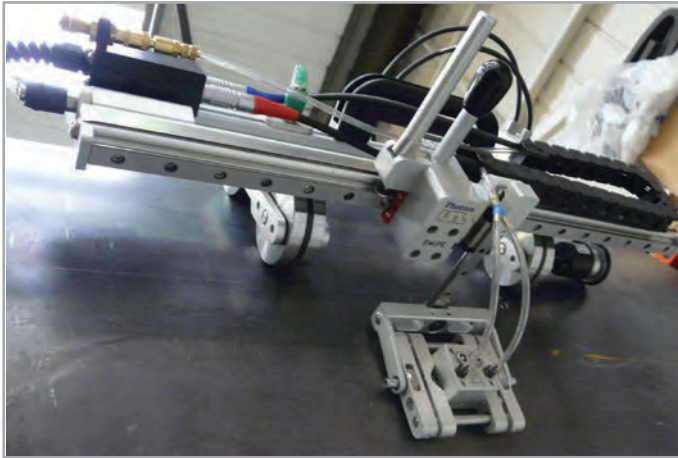
- **Versatile:** unlimited scan length (rolling axis)
- **Compact:** Ideal for use in restricted access areas
- **Fast:** quick to set up with quick release features
- **Adaptable:** for use on any material and in any orientation
- **Operator-friendly:** features make inspections easy
- **Compatible:** can be used with any acquisition unit

### Features

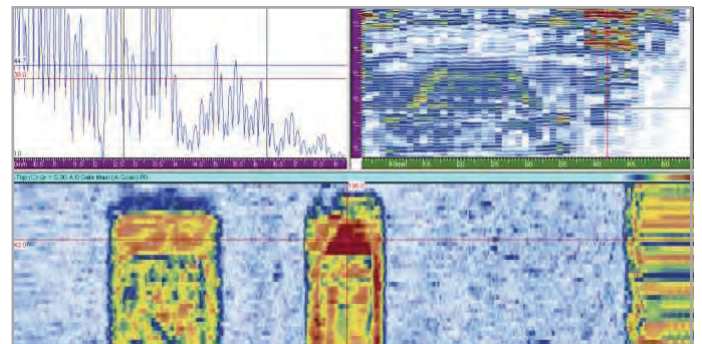
- Interchangeable swipe arms available from 400mm up to 800mm
- Dual axis encoding
- Quick release brake locks rolling axis to maintain position during swipe scan
- Three button junction box to start, pause and save scans
- Quick release handles
- Operates on any material (with magnetic wheels available for ferritic material)

## Belt Configuration Chart

Model	Length (X) mm (in.)	Width (Y) mm (in.)	Height (Z) mm (in.)
Swipe 400	unlimited	400 (16)	155 (6.2)
Swipe 600	unlimited	600 (24)	155 (6.2)
Swipe 800	unlimited	800 (32)	155 (6.2)



Swipe with magnetic wheels



Phased Array data collected using the Swipe scanner with a 64 element phased array probe

## Accessories

- Magnetic wheels x 4 - for operation on ferritic material
- Encoder junction box with operator buttons and 5m cable: enables scans to be started, paused and saved from the scanner
- Custom probe base - different widths available to suit any probe or wedge
- Couplant delivery pump - manual
- Phased array toolpost (provides a stronger loading of the probe onto the part surface)
- Phoenix ISL phased array probe range
- CDS automated couplant delivery system



## Standard Kit

- Swipe scanner frame with integrated brake and brake handle
- Swipe arm - 400, 600 or 800 (please specify model on quote request/order)
- Spring loaded encoder
- Encoder junction box with 5m cable
- 4 x Rubber wheels
- 1 x Toolpost to hold 40mm probe or wedge
- Irrigation tubing and accessories
- Cable management
- Protective carry case



**Phoenix Inspection Systems Limited**, Dalton House, 40 Hardwick Grange, Warrington, WA1 4RF, United Kingdom

t: +44 (0) 1925 826000 | f: +44 (0) 1925 838788 | e: sales@phoenixisl.com | [www.phoenixisl.com](http://www.phoenixisl.com)

Phoenix Inspection Systems Limited is a Nova Instruments company. For further information visit [www.novaic.com](http://www.novaic.com)

Phoenix Inspection Systems Limited has a policy of continuous development therefore reserves the right to change products, specifications and pricing without forward notice. Actual products may differ from those presented herein. The information in this data sheet is accurate at time of publication.