

# AUL Series LED UV Lamps



We manufacture highest quality of LED UV Products in accordance with international standards ASTM E3022. The AUL Series of LED UV Lamps are considered to be the benchmark in the NDT Industry. These Lamps are light weight, rugged and cost effective which makes them a perfect combination to be used for Fluorescent Inspection.

The most unique feature of AUL Series of LED UV Lamps is that depending on the application, operator can choose the model from AC to Battery Operated.



**AUL-100**

**AUL-100D**

**AUL-125**

**AUL-150**

**Salient Features:**

- Ergonomically Designed Robust Aluminium Housing
- Instant ON/OFF, No Warm-Up Time For Full Intensity
- Long Lasting LED's (40,000 Hrs.) Life
- Even Beam Profile Without Hotspots
- UV-A Pass Filter
- Rechargeable Li-Ion Battery\*
- Switchable between UV & White Light\*\*
- Mechanical Passive Cooling System

\* Not Applicable for AC models

\*\*Applicable for AUL-100D Series

Order Part No.:	2 UV-A LED	2 UV-A LED + 1 White LED	3 UV-A LED	4 UV-A LED
<b>Internal Battery</b>	AUL-100	AUL-100D	AUL-125	AUL-150
<b>AC Mains</b>	AUL-100 AC	AUL-100D AC	AUL-125 AC	AUL-150 AC

**Kit Contains:**

- LED UV lamp
- Neck strap
- Protective UV goggles with pouch
- Battery charger
- Operation manual & certificate of conformity
- Soft carry case

**Note:**

- Kindly Specify the Plug Type
- Standard Warranty: 12 Month. For extended warranty please feel free to talk to sales team.



**Internal Battery**



**AC Mains**

## AUL-100/AUL-100 AC

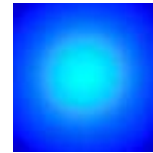


### Technical Specifications:

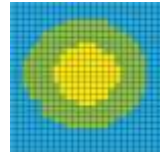
Light Source	:	2 UV-A LED
Max UV-A Intensity with filter at a distance of 38cm(15")	:	5000 $\mu\text{W}/\text{cm}^2 \pm 5\%$
White Light Emission in UV mode	:	<10 Lux (0.92 fc)
Wavelength (Peak)	:	365 nm $\pm 5$ nm
Max Beam Coverage Area	:	$\text{Ø}150\text{mm}$ ( $\text{Ø}6''$ )
Power Requirement	:	100V - 240V, 50-60Hz
Battery Run Time#	:	8-9 Hours
Battery Charge Time#	:	2.5 Hours
Housing Material	:	Powder Coated Aluminium
Housing Dimension(LXD)	:	220x $\text{Ø}110$ (8.6"x $\text{Ø}4.3''$ )
Approximate Weight	:	
• (Battery Model)	:	0.90Kg (1.98lbs)
• (AC Mains)	:	0.85Kg (1.87lbs)
Power Rating	:	4 watt
IP Rating	:	63

### Beam Irradiance Pattern & Profile

- Blue <200  $\mu\text{W}/\text{cm}^2$
- Green 200 - 1000  $\mu\text{W}/\text{cm}^2$
- Yellow 1000 - 5000  $\mu\text{W}/\text{cm}^2$
- Red 5000 - 10000  $\mu\text{W}/\text{cm}^2$
- White > 10000  $\mu\text{W}/\text{cm}^2$



2 - LED Array at 15"



AUL 100

## AUL-100D/AUL-100D AC

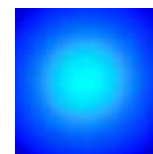


### Technical Specifications:

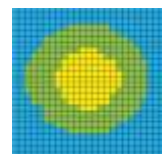
Light Source	:	2 UV-A LED+1 White LED
Max UV-A Intensity with filter at a distance of 38cm(15")	:	5000 $\mu\text{W}/\text{cm}^2 \pm 5\%$
White Light Intensity	:	>3500 Lux/>325 ft-candle
White Light Emission in UV mode	:	<10 Lux (0.92 fc)
Wavelength (Peak)	:	365 nm $\pm 5$ nm
Max Beam Coverage Area	:	$\text{Ø}150\text{mm}$ ( $\text{Ø}6''$ )
Power Requirement	:	100V - 240V, 50-60Hz
Battery Run Time#	:	8-9 Hours
Battery Charge Time#	:	2.5 Hours
Housing Material	:	Powder Coated Aluminium
Housing Dimension(LXD)	:	220x $\text{Ø}110$ (8.6"x $\text{Ø}4.3''$ )
Approximate Weight	:	
• (Battery Model)	:	0.95Kg (2.09lbs)
• (AC Mains)	:	0.90Kg (1.98lbs)
Power Rating	:	4 watt
IP Rating	:	63

### Beam Irradiance Pattern & Profile

- Blue <200  $\mu\text{W}/\text{cm}^2$
- Green 200 - 1000  $\mu\text{W}/\text{cm}^2$
- Yellow 1000 - 5000  $\mu\text{W}/\text{cm}^2$
- Red 5000 - 10000  $\mu\text{W}/\text{cm}^2$
- White > 10000  $\mu\text{W}/\text{cm}^2$



2 - LED Array at 15"



AUL 100D

# Applicable for battery operated models only

## AUL-125/AUL-125 AC



### Technical Specifications

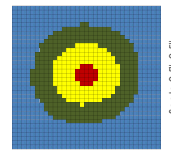
Light Source	:	3 UV-A LED
Max UV-A Intensity with filter at a distance of 38cm(15")	:	7000 $\mu\text{W} / \text{cm}^2 \pm 5\%$
White Light Emission in UV mode	:	<10 Lux (0.92 fc)
Wavelength (Peak)	:	365 nm $\pm 5$ nm
Max Beam Coverage Area	:	$\varnothing 180\text{mm}$ ( $\varnothing 7"$ )
Power Requirement	:	100V - 240V, 50-60Hz
Battery Run Time#	:	6-7 Hours
Battery Charge Time#	:	2.5 Hours
Housing Material	:	Powder Coated Aluminium
Housing Dimension(LXD)	:	220x $\varnothing$ 110 (8.6"x $\varnothing$ 4.3")
Approximate Weight		
• (Battery Model)	:	1.00Kg (2.20lbs)
• (AC Mains)	:	0.95Kg (2.09lbs)
Power Rating	:	6 watt
IP Rating	:	63

### Beam Irradiance Pattern & Profile

- Blue <200  $\mu\text{W}/\text{cm}^2$
- Green 200 - 1000  $\mu\text{W}/\text{cm}^2$
- Yellow 1000 - 5000  $\mu\text{W}/\text{cm}^2$
- Red 5000 - 10000  $\mu\text{W}/\text{cm}^2$
- White > 10000  $\mu\text{W}/\text{cm}^2$



3 - LED Array at 15"



AUL 125

Scale 0.5"x0.5"

## AUL-150/AUL-150 AC

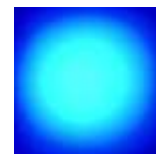


### Technical Specifications

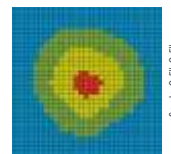
Light Source	:	4 UV-A LED
Max UV-A Intensity with filter at a distance of 38cm(15")	:	8000 $\mu\text{W} / \text{cm}^2$
White Light Emission in UV mode	:	<10 Lux (0.92 fc)
Wavelength (Peak)	:	365 nm $\pm 5$ nm
Max Beam Coverage Area	:	$\varnothing 200\text{mm}$ ( $\varnothing 8"$ )
Power Requirement	:	100V - 240V, 50-60Hz
Battery Run Time#	:	4-5 Hours
Battery Charge Time#	:	2.5 Hours
Housing Material	:	Powder Coated Aluminium
Housing Dimension(LXD)	:	220x $\varnothing$ 110 (8.6"x $\varnothing$ 4.3")
Approximate Weight		
• (Battery Model)	:	1.00Kg (2.20lbs)
• (AC Mains)	:	0.95Kg (2.09lbs)
Power Rating	:	8 watt
IP Rating	:	63

### Beam Irradiance Pattern & Profile

- Blue <200  $\mu\text{W}/\text{cm}^2$
- Green 200 - 1000  $\mu\text{W}/\text{cm}^2$
- Yellow 1000 - 5000  $\mu\text{W}/\text{cm}^2$
- Red 5000 - 10000  $\mu\text{W}/\text{cm}^2$
- White > 10000  $\mu\text{W}/\text{cm}^2$



4 - LED Array at 15"



AUL 150

Scale 0.5"x0.5"

© Copyright 2024 by Arora Technologies (P) Limited. Specifications are subjected to change without notice.