

AUF Series LED UV Flood Lamps



Salient Features

- Robust Aluminium Housing
- Inter Connected with Each Other
- Switchable between UV & White Light
- Electronic Intensity Control
- Long Lasting LED's (40,000 Hrs) Life
- Mechanical Active Cooling System with Fans
- Even Beam Profile Without Hotspots
- UV-A Pass Filter

We manufacture highest quality of LED UV Products in accordance with international standards ASTM E1444 and ASTM E3022. The **AUF Series** of LED UV Flood Lamps are considered to be the benchmark in the NDT Industry. These Lamps are light weight, rugged and cost effective which makes them a perfect combination to be used for Fluorescent Inspection.

The most unique feature of **AUF Series** of LED UV Flood Lamps as that they all can be connected with each other on either side which means you can extend the length of coverage area to any extend depending on the requirement.

Technical Specifications

Parameters	AUF-350	AUF-500	AUF-1000
Light Source	8 UV-A LED/2 White LED	16 UV-A LED/4 White LED	32 UV-A LED/8 White LED
Min UV-A Intensity with filter at a distance of 15"(38cm)	6500 uw/cm ²	6500 uw/cm ²	6500 uw/cm ²
White Light Intensity	>3500 Lux/>325 ft-candle	>3500 Lux/>325 ft-candle	>3500 Lux/>325 ft candle
White Light Emission in UV mode	<10 Lux (0.92 fc)	<10 Lux (0.92 fc)	<10 Lux (0.92 fc)
Wavelength (Peak)	365 nm ± 5 nm	365 nm ± 5 nm	365 nm ± 5 nm
Max Beam Coverage Area	400mm x 270mm	600mm x 270mm	1100 mm x 270 mm
Intensity Control	From 20% - 100%	From 20% - 100%	From 30% - 100%
Power Requirement (AC Mains)	100V - 264V, 50-60Hz	100V - 264V, 50-60Hz	100V - 264V, 50-60Hz
Housing Material	Powder Coated Aluminium	Powder Coated Aluminium	Powder Coated Aluminium
Housing Dimensions	240x170x100 mm	485x170x100 mm	960x170x100 mm
Weight	4 Kg (8.8 lbs)	7.5 Kg (16.5 lbs)	15.5 Kg (34.1lbs)

Kit Contains:

- LED UV Flood Lamp
- Power Cord Cable
- Chains with Hooks
- Operation Manual & Certificate of Conformity

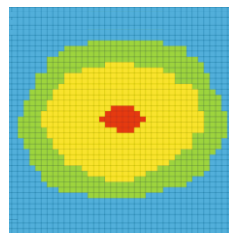
Order Part No.:

- AUF-350
- AUF-500
- AUF-1000

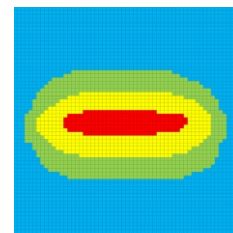
Note:

Kindly Specify the Plug Type
 Standard Warranty: 1 Year
 (For extended warranty please feel free to talk to sales team)

Beam Irradiance Pattern & Profile



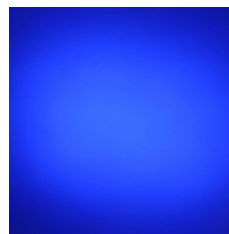
AUF-350



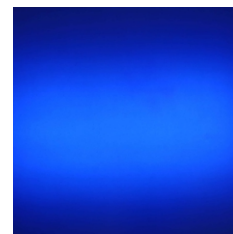
AUF-500

Scale 0.5"x0.5"

- Blue <200 μW/cm²
- Green 200 - 1000 μW/cm²
- Yellow 1000 - 5000 μW/cm²
- Red 5000 - 10000 μW/cm²
- White > 10000 μW/cm²



8 - LED Array at 15"



16 - LED Array at 15"